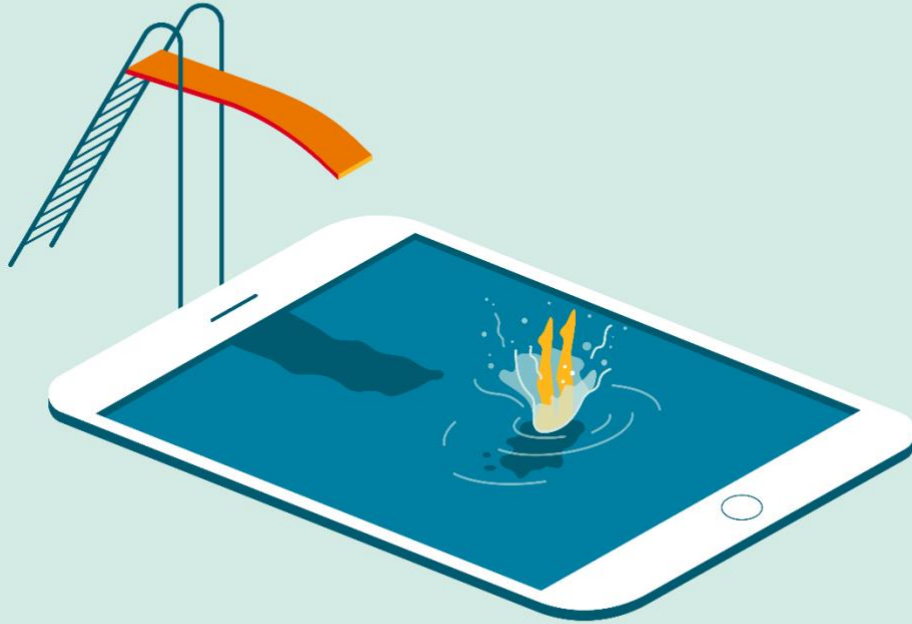




Pearson | Connexus



Meet Pearson Connexus

Pearson Connexus – Demo Access

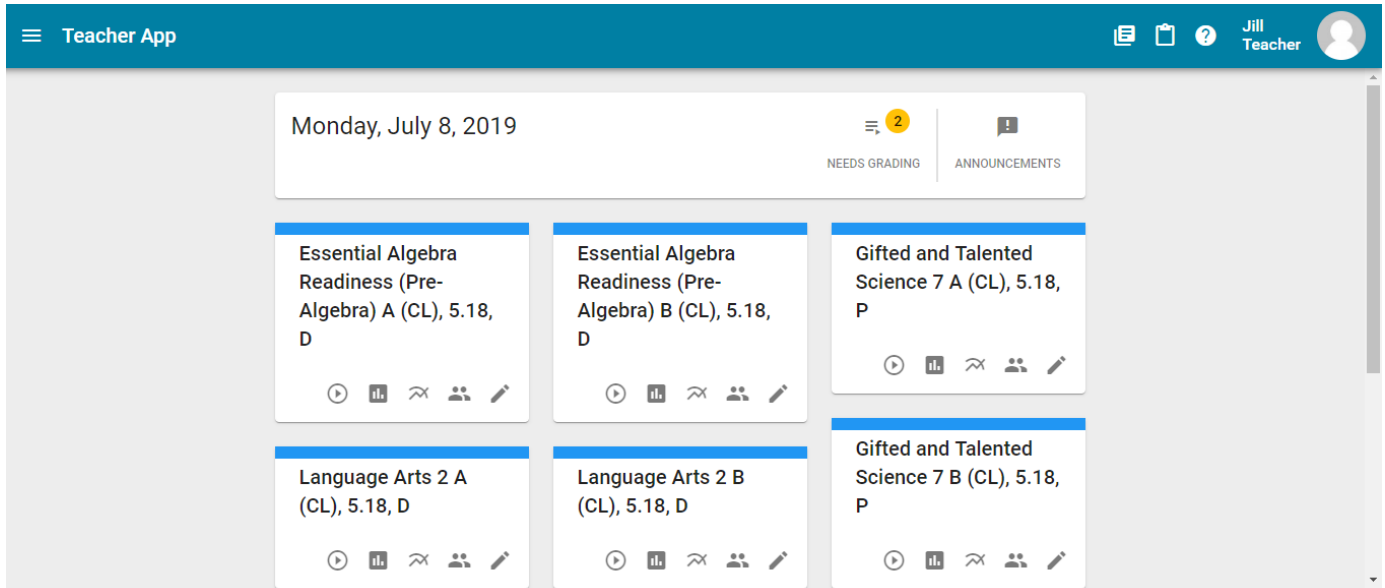
Access your demo by going to

<https://sandbox-rush-county-schools-6-19-20.lms.pearsonconnexus.com/>

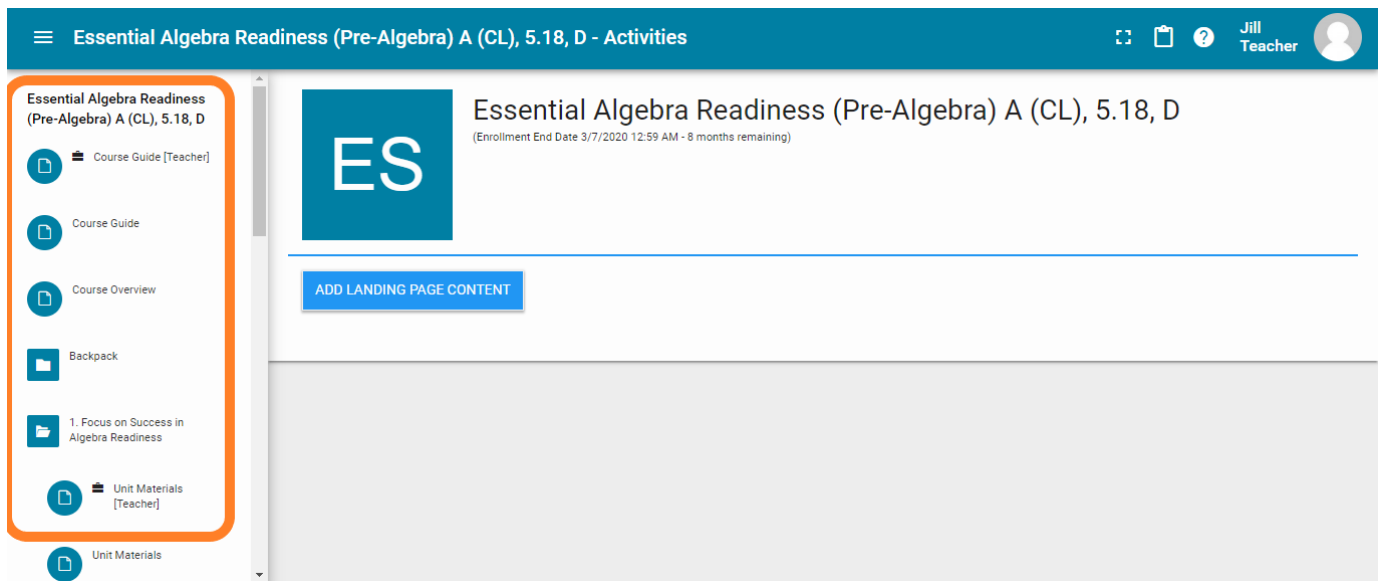
| ROLE | FIRST NAME | LAST NAME | USERNAME | PASSWORD |
|----------------|------------|-----------|------------|------------|
| Administrator | Sarah | Principal | sprincipal | spP@ssword |
| Teacher-Author | Francis | Teacher | fteacher | ftP@ssword |
| Teacher-Author | Jill | Teacher | jteacher | jtP@ssword |
| Student | Kirsi | Anderson | kanderson | kaP@ssword |
| Student | Jayson | Allen | jallen | jaP@ssword |
| Student | Charlie | Carter | ccarter | ccP@ssword |
| Observer | Eva | Smith | esmith | esP@ssword |

Instruction for using Pearson Connexus Demo Access

- 1 When you login as a **Teacher** or **Student** you will be on the **Home Page**. Click on the course tile you would like to view.

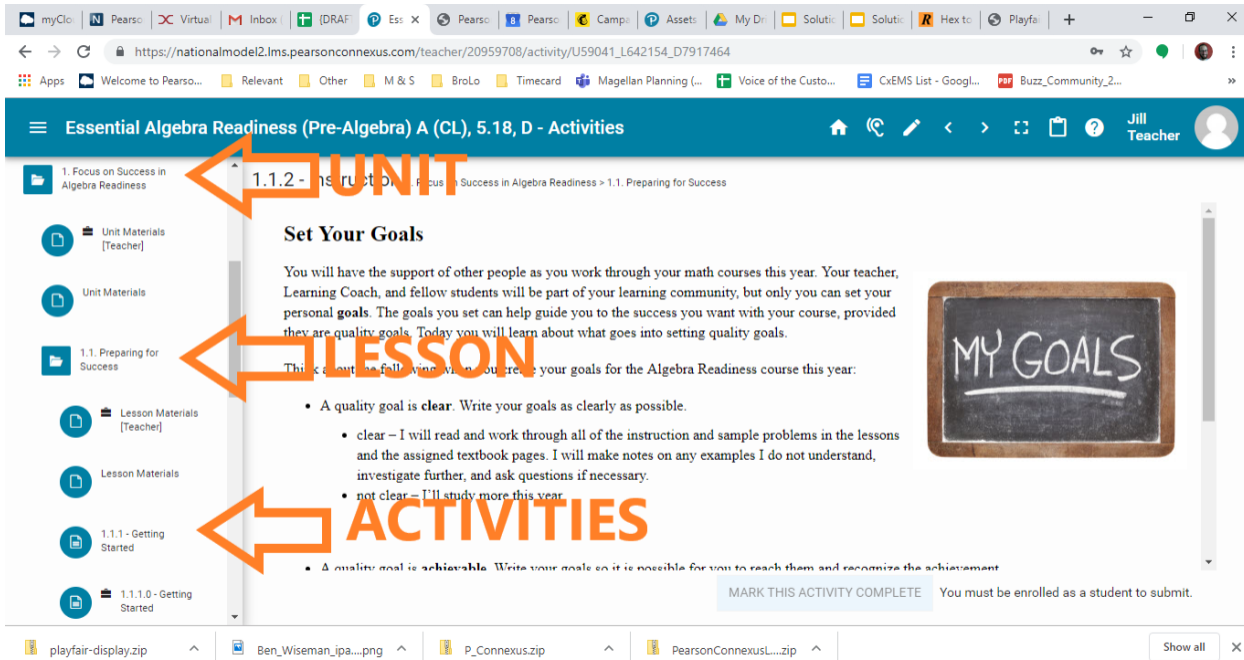


- 2 You will see the course outline on the left.

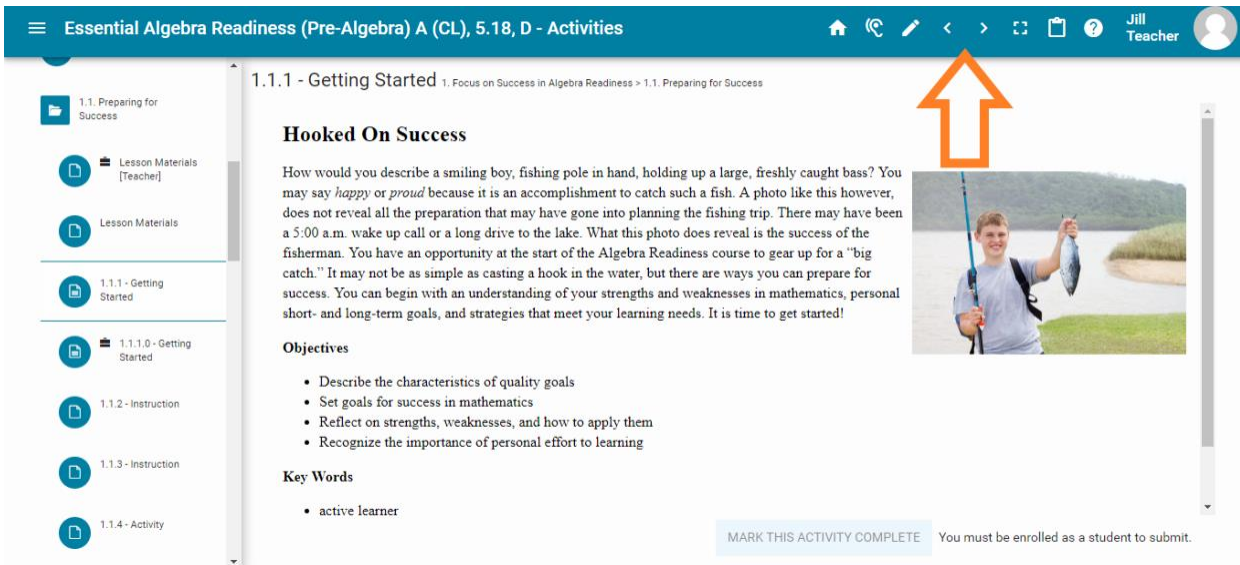


3 Courses in the tree are broken into 3 parts:

- 1) **Unit**- the combination of all lessons and activities
- 2) **Lessons**- A piece of the Unit that contains activities
- 3) **Activities** – The pieces of learning that a student works through



4 You may navigate through the courses using the arrows in the upper right hand of the screen



5 Congratulations! You are now viewing Pearson Connexus content.